

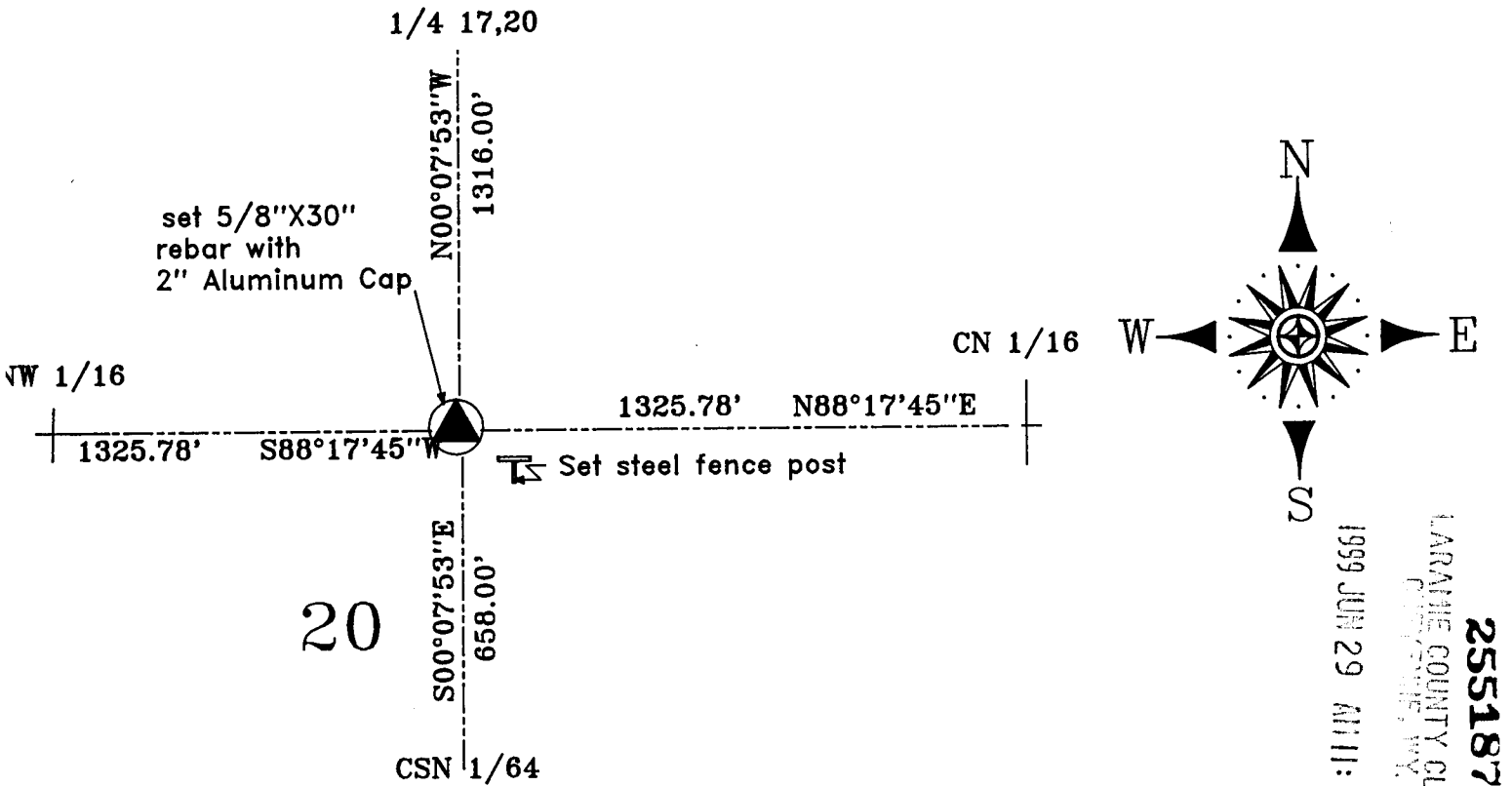
State of Wyoming Corner Record

(In compliance with the CORNER PERPETUATION AND FILING ACT, Wyoming Statutes, 1977,
Section 36~11~101, et seq., and the Rules and Regulations of the Board of Registration for Professional
Engineers and Professional Land Surveyors)

The reverse side of this form may be used if more space is needed.

The Record of the original survey and the citation of the source of the historical information (if the corner is lost or obliterated). The description of the corner monumentation evidence as found and/or the monument and it's accessories as established to perpetuate the location of this corner. A sketch of the relative location of this Monument, accessories, and reference points with the course and distance to adjacent corner (s) (if determined during this Survey). The Method and Rationale used for the reestablishment of lost and obliterated corner.

NOTE: GLO did NOT set these corner during the original survey.
Set 5/8" X 30" rebar with a 2" Aluminum Cap marked appropriately with a steel "T" fence post set as a guard stake as shown.



Date of Field Work: June 1999 Office Reference: Open Trail Est. 9030

Cross Index Diagram

Firm/Agency, Address

Terrestrial Surveying & Mapping Co.
"Your Friendly Neighborhood Surveyor"
1127 Terry Ranch Road
Cheyenne, Wyoming 82007
Telephone Number: (307) 634~9360

This Corner Record was prepared by
me or under my direction and
supervision.

SEAL & SIGNATURE

1	2	3	4	5	6	7	8	9	10	11	12	13	14	15	16	17	18	19	20	21	22	23	24	25
A																								
B																								
C																								
D																								
E																								
F																								
G																								
H																								
I																								
J																								
K																								
L																								
M																								
N																								
O																								
P																								
Q																								
R																								
S																								
T																								
U																								
V																								
W																								
X																								
Y																								
Z																								



Corner Name: CN 1/16 Section: 20 T. 14 N. R. 63 W. 6th P.M. Cross Index No. 0~7